
CIRPAS' UAV Facilities at Camp Roberts, CA

The
Naval Postgraduate School's
Center for Interdisciplinary Remotely-Piloted Aircraft Studies



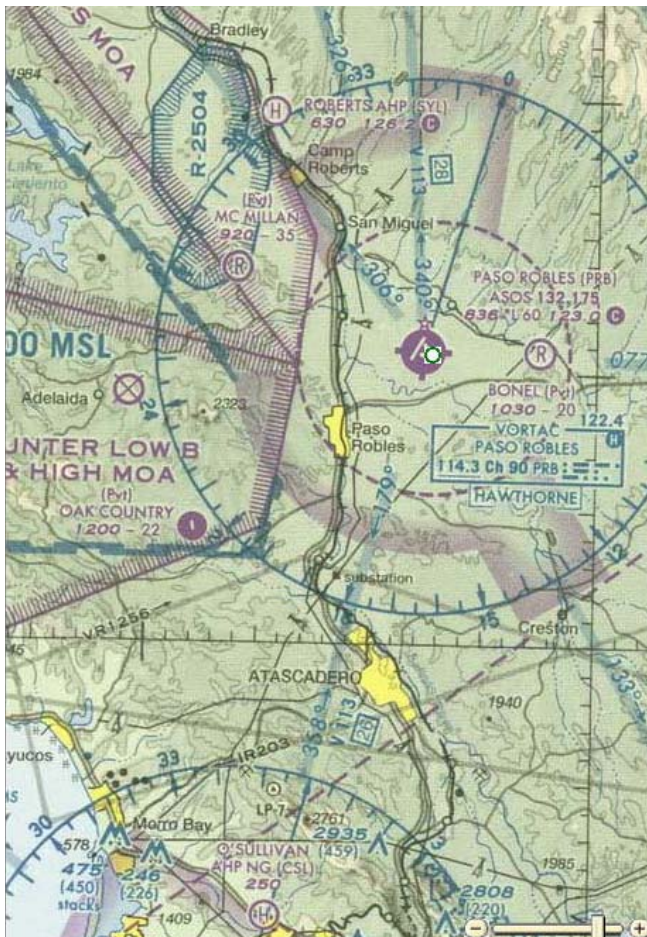
Last Revised 26 August 2007

UAV FACILITY DESCRIPTION

Camp Roberts California Army National Guard Training Site is located in the California Central Coast region approximately half way between Los Angeles and San Francisco, CA, about 110 miles south of Monterey, CA and the Naval Post Graduate School.

In agreement with the CA-ANG CIRPAS maintains and manages a UAV Range within the restricted air space (RAS) designated R-2504.

Camp Roberts provides CIRPAS with a base of operations for UAV Flight activities. All CIRPAS flight operations are conducted by the Naval Postgraduate School (NPS) or our Caltech contractor(s) for NPS. NPS' mission includes the requirement to work with a variety of different developers in order to study the technology and interrelationship possibilities. Henceforth, CIRPAS invites other UAV organizations to utilize the UAV Range on a cost reimbursable basis.



Restricted Air Space

The airfield is within restricted area (RAS) designated R-2504 (surface to 15kft MSL). R-2504 is approximately 5 x 9.5 miles (8K x 16K).

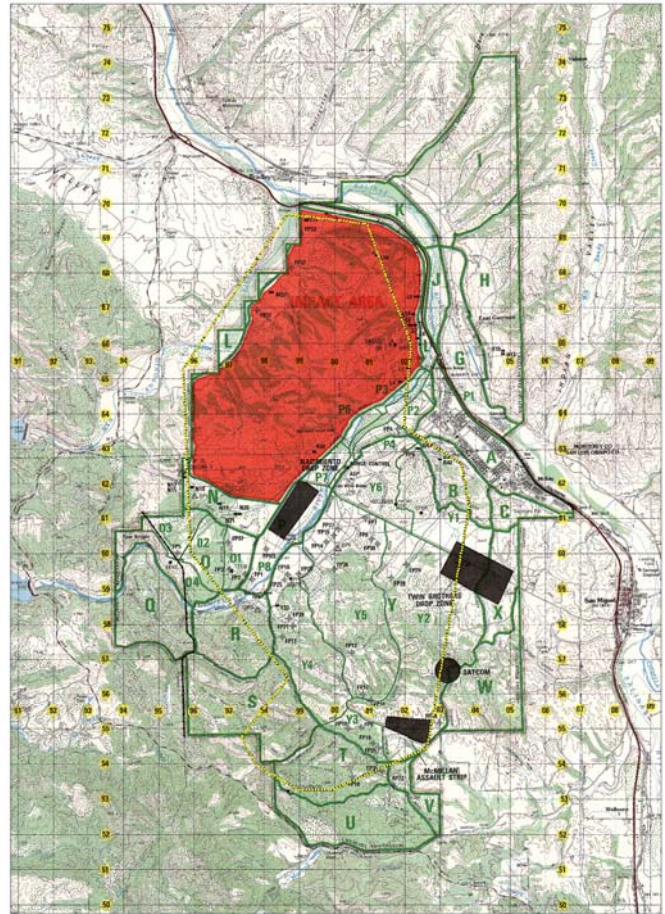
Camp Roberts

Camp Roberts Army National Guard Training Site consists of 42,784 acres. It provides a setting for military units, primarily California Army National Guard units, to conduct training.

The sparse utilization of the maneuver range, along with the restricted air space, available frequencies, diverse geographic terrain, and mix of open spaces and vegetation creates a ideal location for UAV Flight testing, development and training. Camp Roberts is a unique site for interoperability training with UAVs and Ground Units.

McMillan Airfield

McMillan Airfield (designated CA62) is located near the base's southern boundary at 35° 43'N 120° 46'W, UTM Grid 10SGQ 025546. McMillan Airfield provides CIRPAS an isolated geographical location, favorable weather conditions and abundant restricted airspace over Camp Roberts. McMillan Airfield is 3500' long, 65' wide with 10' shoulders and lays on a heading of 281 degrees and at an elevation of 920'. McMillan Airfield, Camp Roberts, CA, provides CIRPAS with a unique base of operations for UAV flight activity and offers the following:



Autonomous UAV operations

McMillan Airfield is dedicated completely to our users' and provides a base of operations void of interference from military or commercial traffic. Due to the lack of other traffic it is possible to create a flexible flight schedule that supports the Test and Evaluation community with out impacting the military's Operational and Training needs.

The airfield is remote from populated areas and priority flights.

Local weather pattern allows for a high number (250 or more) of flight days per year.

Support infrastructure

Office building with conference room, big screen monitor, telephones and internet connectivity available to our customers

40'x70' hangar

Material Handling Equipment on site

Military vehicles available from the nearby MATES facility

Currently the airfield is daytime operations only and non-instrumented. The runway is a B-II category airstrip, adequate for a maximum 12,500 lbs. aircraft.

SUAV Range

CIRPAS also manages a Small UAV Range (SUAV) on Camp Roberts for SUAVs that do not require a runway to take off or land. The SUAV Range allows for multiple use of the restricted air space. Facilities located at the SUAV Range include an Office/classroom, storage area, and work area.

Battlespace

The RAS allows for flights over three unique geographic areas:

The southern portion of the installation is rugged and heavily wooded.

The central area is characterized by low rolling hills, grasslands and oak trees.

The northern area is mostly defined by the winding Nacimiento River

The training site also contains ranges, firing points, helipads, parachute drop zones and other miscellaneous facilities. An 8,130-acre designated impact area supports live-fire training from any of the 39 artillery firing points and the 24 live-fire ranges available for use at Camp Roberts.

Targets:

Various old military vehicles “hulks” are located in the impact area to be used as targets. These include tanks, infantry fighting vehicles, helicopters, trucks, etc. If desired, user may provide their own targets if coordinated with the appropriate base.

CIRPAS owns and operates an operational Saracen APC which can be positioned as desired.

Potential exists to coordinate flight activities with existing National Guard or other military activities.



CIRPAS Support Scheduling

Priorities

Military units always have priority of use of the Camp Roberts Range and airspace

The Naval Postgraduate School conducts a quarterly exercise in conjunction with SOCOM at McMillan Airfield and has priority of use of the runway and facility.

After one and two above, CIRPAS services and assets are available on a first-come, first-served basis.

Procedures

The procedures for coordinating CIRPAS support are specified in the CIRPAS Memorandum, Subject: Flight Operations Request at Camp Roberts' which explains the procedures for requesting flight activities at McMillan Airfield. This document is available on line or upon request. Basic requirements are:

Description of Planed Activity

Identification of air vehicle and payloads

Provisions for liability

Safety of flight statement

Frequency Management

Camp Roberts is a relatively frequency ‘clean’ zone and most common UAS frequencies are available for use.

CIRPAS will coordinate with the CA-ANG for frequency de-confliction within the confines of Camp Roberts. If your frequency will emit off base, then it is the User’s responsibility to coordinate with Regional Frequency Managers.

Initial Contact: CIRPAS McMillan Air Field Site Manager, Ray Jackson at rpjackson@cirpas.org or 805-227-1314 to begin coordination.

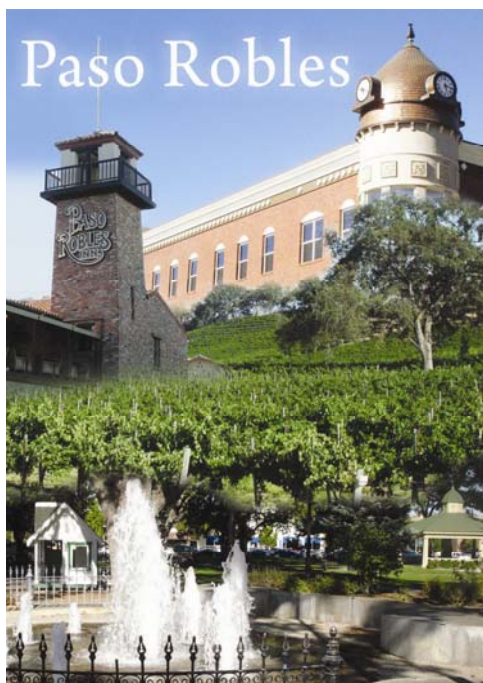
Benefits

Restricted Air Space over sparsely populated terrain of interest.

Opportunity for integration of multiple platforms and technologies

Turn Key Operation: Single point of contact for:

- Range coordination
- Flight approval
- Frequency management
- Logistical requirements (except billeting and mess for military)



Located in Central California Coastal Region near major infrastructures, with ease of access and in the heart of the Paso Robles Wine Region with plenty of entertainment opportunities

For more information refer to <http://www.cirpas.org/>